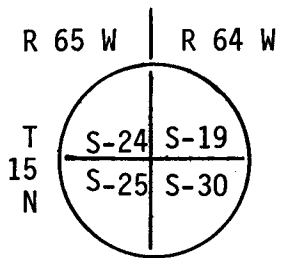


CERTIFIED LAND CORNER RECORDATION



DESCRIPTION OF CORNER EVIDENCE FOUND, AND ORIGINAL RECORD (If known)

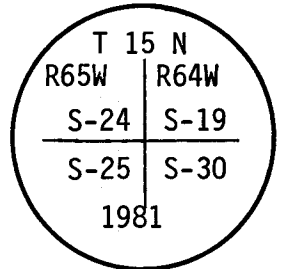
Found no evidence of Corner. Re-established Corner in accordance with procedures set forth in "Manual of Surveying Instructions 1973" U.S. Dept. of the Interior.

G.L.O. call 20"X10"X8" Limestone

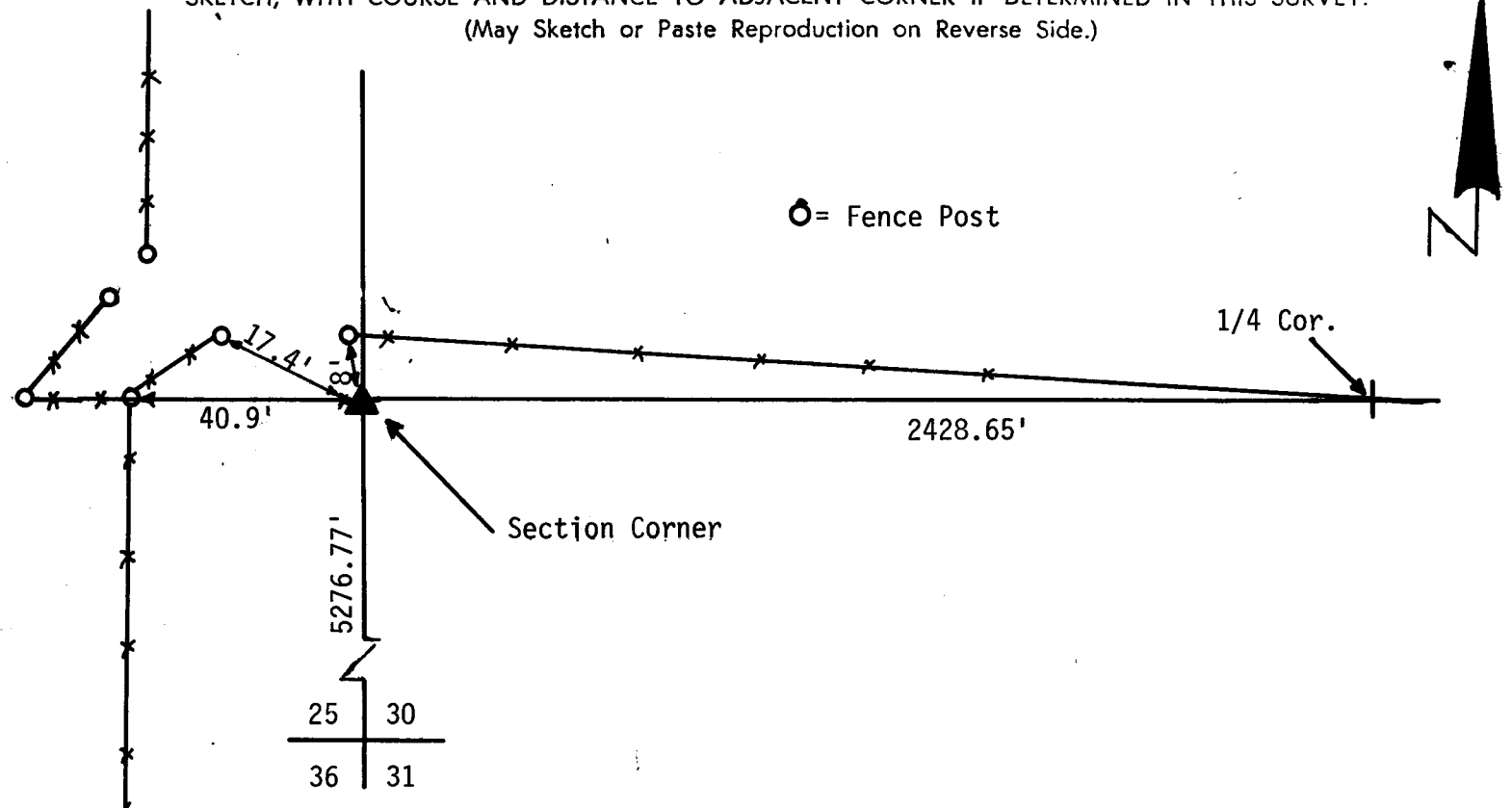
DESCRIPTION OF MONUMENT AND ACCESSORIES ESTABLISHED TO PERPETUATE THE ORIGINAL LOCATION OF THIS CORNER:

Set 2" dia. pipe w/ Brass Cap stamped w/ rocks piled around Corner.

see ties below



SKETCH, WITH COURSE AND DISTANCE TO ADJACENT CORNER IF DETERMINED IN THIS SURVEY. (May Sketch or Paste Reproduction on Reverse Side.)



I, Glen L. Roberts certify that I have carefully performed or reviewed the work done on the diagrammed corner as reported on this recordation form and approve the same.

Glen L. Roberts Wyo. P.E. & L.S. 347
Signature of Surveyor Registration No.

STATE OF WYOMING,

Office of Clerk and Recorder,

County of Saramie

#615467

This "corner record" was filed for record on the APR 10 1981 day of 19, was noted on the cross-index plat and is assigned page No. R-1, in book No. 15-64.

James C. Whitehead
County Official

Cross Index No. <u>R-25</u>	T. <u>15</u>	R. <u>65</u>	Mer.
	T. <u>15</u>	R. <u>65</u>	Mer.
	T. <u>15</u>	R. <u>65</u>	Mer.
	T. <u>15</u>	R. <u>65</u>	Mer.
	T. <u>15</u>	R. <u>65</u>	Mer.
	T. <u>15</u>	R. <u>65</u>	Mer.
	T. <u>15</u>	R. <u>65</u>	Mer.
	T. <u>15</u>	R. <u>65</u>	Mer.

R-1 15-64